

Technical Bulletin

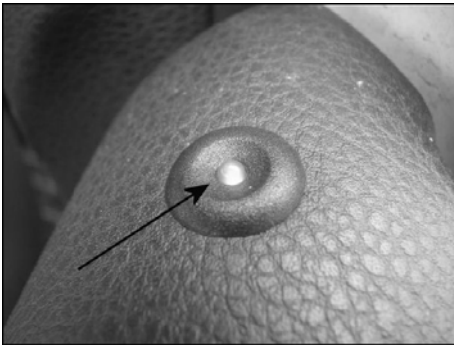


Model(s)	Year	Eng. Code	Trans. Code	VIN Range From	VIN Range To
Rabbit, GTI	2007	All	All	1K_7W000001	1K_7W206473

Condition

96 07 01 May, 25 2007 2015105

Driver Door, Central Locking -Safe- Indicator Lamp -K133- Remains Illuminated



After unlocking the vehicle with the remote control, the LED remains illuminated. Illumination may also occur while operating the vehicle.



Note:

Central Locking Indicator Lamp -K133- illumination **has no effect on functions** of central locking or the alarm system. The concern is with the LED control circuit only.

Technical Background

If door is unlocked by remote control at the same time as the LED flashes, the LED may illuminate and stay on.

Concern is due to a software fault in the door control module.

Production Solution

Updated door control module software from February 2007.

Part number	Old SW version	New SW version
1K0959701N	0972	0986

Technical Bulletin



Service



Tip:

LED goes out and LED returns to normal operation when vehicle is locked with the remote key.

- Install driver door control module Part No. 1K0959701N with updated software level 0986 to correct the concern. See Repair Manual Group 57 in ElsaWeb.

Warranty

To determine if this procedure is covered under Warranty, always refer to the Warranty Policies and Procedures Manual	
Claim Type:	See the Warranty Policies and Procedures manual for the appropriate Claim Type**
Part Identifier:	6454
Damage Code:	6454 40 _ _ _ * 2
Labor Operation: Remove and Install Door Panel	70591900 = 40 TU
Labor Operation: Replace Door Module	64541960 = 10 TU
Diagnostic Time:	Diagnostic time reimbursement follows guidelines printed in the Volkswagen Policies and Procedures Manual
Claim Comment: Input "As per Technical Bulletin 2015105" in comment section of Warranty Claim.	

* Code per warranty vendor code policy.

** Vehicle may be outside any Warranty in which case this Technical Bulletin is informational only.

Required Parts and Tools

Description	Part No:	Quantity
Door Control Module	1K0959701N	1

See Repair Manual for Special tools required.

Additional Information

All part and service references provided in this Technical Bulletin are subject to change and/or removal. Always check with your Parts Dept. and Repair Manuals for the latest information.